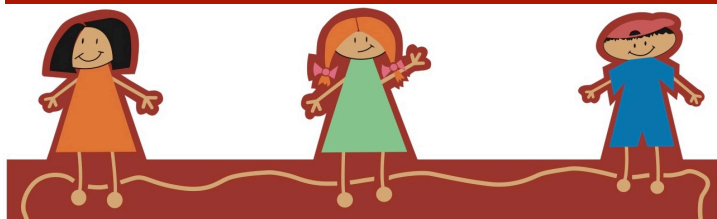


# Te Poi School



**A small school where big things happen.**

## READING TOGETHER WORKSHOPS:

Starting 5<sup>th</sup> March. A series of 4 workshops designed to take the stress and frustration out of listening to your child read and turn that into success for all. Limited to 8 families. Please register your interest.

## FOR SALE:

DRZ110 Suzuki child's motorbike. \$900ono.  
Chicken hutch for 4-6 chooks \$400ono. Both items in excellent condition. Phone Michelle 888 1661or 027 286 9995.



## ONE VOICE PRODUCTIONS:

Want your child to learn how to sing or play a musical instrument? As we like to see your child have many varied opportunities for learning, these lessons can be undertaken during lunch times on school days. So far we have interest in keyboard and guitar. If you are interested in either of these options please let us know.

***Congratulations to the Brogden Family. Their new little bundle arrived safely last night at Waikato Hospital.***

## TOUCH RUGBY:

We are looking to enter a combined year 3 and 4 team

touch rugby with Kuranui School. Commencing Tuesday 3<sup>rd</sup> March and running until 31<sup>st</sup> March, all games are played at Matamata College. First 4 children to express interest will be included. See Miss Clark for further information.

## NETBALL:

Any girls in years 3-6 who are interested in playing netball this year, please let us know.

## FRIDAY LUNCH ORDERS:

A reminder that all lunch orders must be in a named envelope please.

|                       |        |
|-----------------------|--------|
| All pies              | \$3.00 |
| Sausage rolls         | \$2.00 |
| Egg or ham sandwich   | \$3.00 |
| Ham or chicken roll   | \$2.90 |
| Ham/beef/chicken wrap | \$4.20 |
| Apple or custard pie  | \$2.50 |
| Choc chip biscuit     | \$1.40 |
| Just Juice            | \$2.50 |

## Principal's Comment:

Welcome to Mitchell Jarvis who started today. A big thank you also to the Jarvis family for hosting the family picnic last Thursday - a massive turn out. The waterslide was a huge hit and it was great to see the Dads giving it a go this year. The evening was such a success thanks to everyone's support and help in the setting up, organisation, cooking and clean up - an excellent example of our family school in action.

Teachers are in the middle of assessments. We use these as a baseline to report to you on and against to show progress throughout the year. We are restructuring our Junior reporting format and times to align with 6 month and full year at school anniversaries. Interview dates will vary for our Year 1 to 3 students. We will keep you informed as the decisions are made

**Linda Larsen, Principal**

## Important Dates – Term 1 Week 3

### 17<sup>th</sup> February 2015

|                           |   |
|---------------------------|---|
| 18 <sup>th</sup> February | Room 9 Nutrition Session                            |
| 19 <sup>th</sup> February | Nutrition Session visit to New World                |
| 26 <sup>th</sup> February | BOT Meeting 6.00pm - all welcome                    |
| 27 <sup>th</sup> February | Life Education visit                                |
| 3 <sup>rd</sup> March     | Small Schools Combined Senior Swim Sports Years 3-6 |
| 13 <sup>th</sup> March    | Interschool Swim Sports                             |
| 17 <sup>th</sup> March    | Parent Interviews                                   |
| 20 <sup>th</sup> March    | School Tryathlon                                    |
| 31 <sup>st</sup> March    | School Walk - Te Waihou                             |
| 2 <sup>nd</sup> April     | Multi coloured Mayhem Day for Autism Awareness.     |
|                           | Last day of term                                    |

